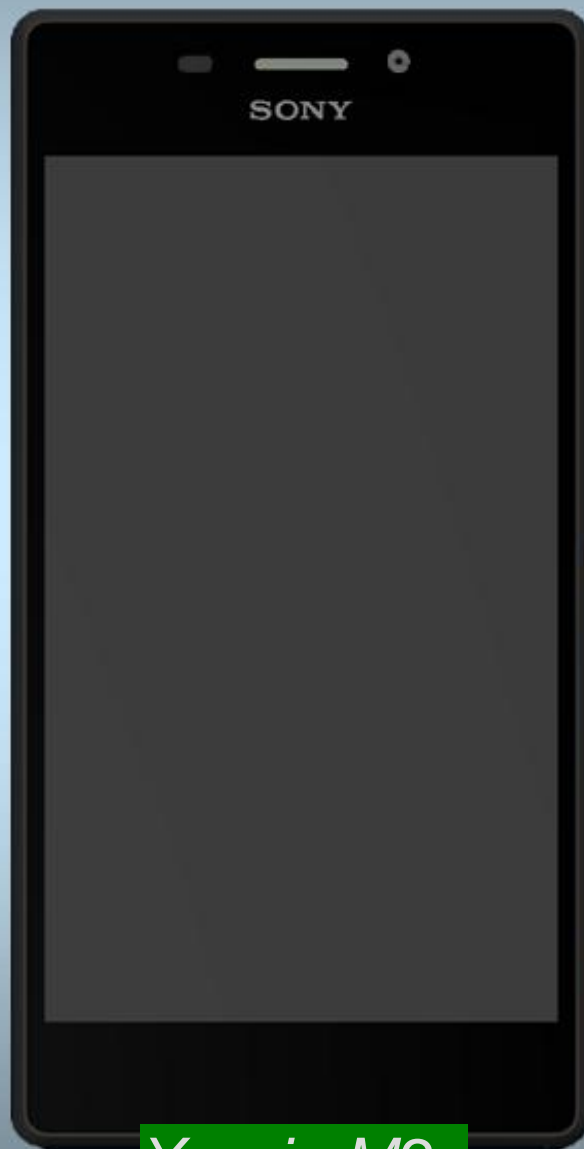


# Component Replacement

- electrical -



*Xperia M2 :*

*D2302,D2303,D2305,D2306,S50h*

**CONTENTS**

1 Replaceable Components ..... 3

2 Component Placing..... 5

3 Additional Repair info ..... 6

4 Revision History ..... 10

*For general information about electrical repair related issues, refer to 1220-1336: Generic Repair Manual - electrical*

*Test after electrical replacement: refer to 1273-1772 Mechanical Test Instruction*

*Do not remove shield can lids (Heat pasta are added and RF performance will be damaged)*

# 1 Replaceable Components

## EXPLANATION OF ABBREVIATIONS USED IN THE COLUMN 'COMMENTS' BELOW

### **COMPONENT LOCATION**

**P** = Primary side

**S** = Secondary side

### **REPAIR METHOD**

**HA** = Hot Air (removal & mounting)

**ST** = Soldering Tool (removal & mounting)

**HA/ST** = Hot Air for removal - Soldering Tool for mounting

**BGA** = BGA Station

**BH** = Bottom Heater

### **ADDITIONAL INFORMATION**

⇒1 (2,3,4, etc.) = Proceed to 'Additional Repair Info' for further instructions in the indicated section(s).

Position	Component	Part no.	Comments
DS1301	LED	1770000098W	P HA+BH ⇨1
FJP2601	COAX CONN	2335000008W	P HA+BH ⇨2
GP3101	SPR CONN	2313000105W	P HA+BH ⇨3
GP3102	SPR CONN	2313000105W	P HA+BH ⇨3
GP3301	SPR CONN	2313000107W	S HA+BH ⇨4
J1401	BATT CONN	2303000078W	P HA+BH ⇨5
J1501	USB CONN	2336000077W	S HA+BH or BGA ⇨6
J170001	AUDIOJACK	2311000080W	S HA+BH/ST ⇨7
J170002	MEMS MIC	2220000025W	P HA+BH ⇨8
J2601	RF SWITCH	2302000020W	P HA+BH ⇨9
J2701	RF SWITCH	2302000020W	P HA+BH ⇨10
J2801	RF SWITCH	2302000020W	P HA+BH ⇨11
PAD2702	SPR CONN	2313000099W	P HA+BH ⇨12
PAD2801	SPR CONN	2313000099W	P HA+BH ⇨13
PAD2802	SPR CONN	2313000099W	P HA+BH ⇨13

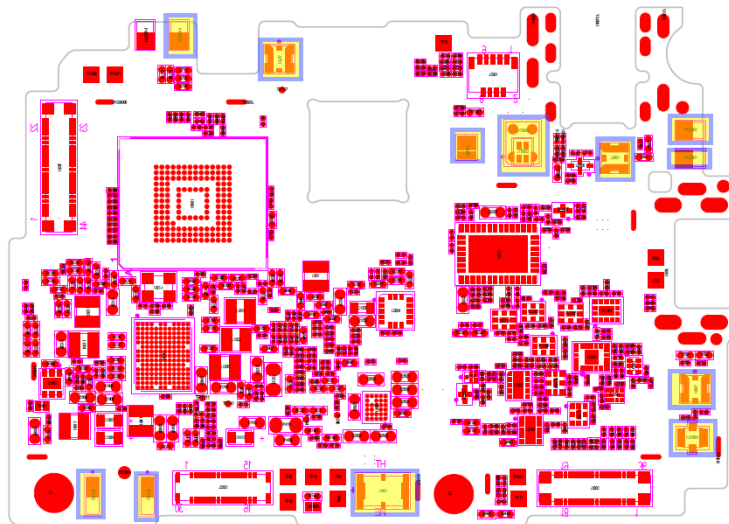
Valid for D2303 and D2306

Position	Component	Part no.	Comments
DS2801	LED	1770000098W	P HA+BH ⇨1
J220001	COAX CONN	2335000008W	P HA+BH ⇨2
GP320001	SPR CONN	2313000105W	P HA+BH ⇨3
GP320002	SPR CONN	2313000105W	P HA+BH ⇨3
GP300001	SPR CONN	2313000107W	S HA+BH ⇨4
J300002	BATT CONN	2303000078W	P HA+BH ⇨5
J150001	USB CONN	2336000077W	S HA+BH or BGA ⇨6
J170001	AUDIOJACK	2311000080W	S HA/ST+BH ⇨7
J170002	MEMS MIC	2220000025W	P HA+BH ⇨8
J220002	RF SWITCH	2302000020W	P HA+BH ⇨9
J360001	RF SWITCH	2302000020W	P HA+BH ⇨10
J270001	RF SWITCH	2302000020W	P HA+BH ⇨11
J360003	SPR CONN	2313000099W	P HA+BH ⇨12
PAD270001	SPR CONN	2313000099W	P HA+BH ⇨13
PAD270002	SPR CONN	2313000099W	P HA+BH ⇨13

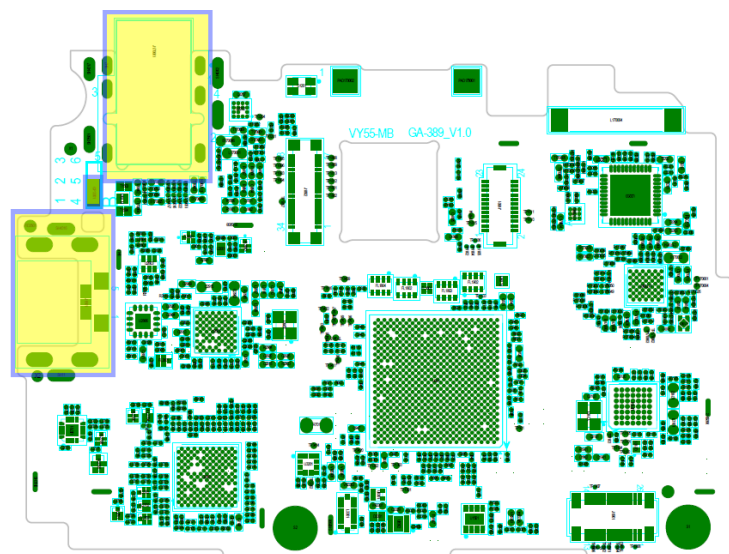
Valid for D2302, D2305 and S50h

## 2 Component Placing

To access the Component Placing document, double-click the icon below.  
Applicable for on-screen viewing only – icon not shown on hard-copies.



Primary side



Secondary side

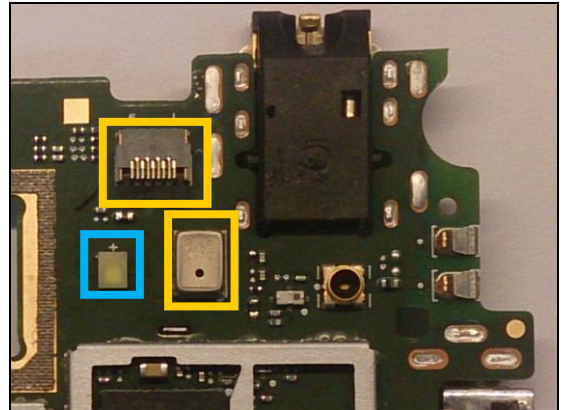
### 3 Additional Repair info

1

DS1301, DS2801

*Replace if Flash LED not working*

*Protect the BtB connector and Mic with capton tape!*

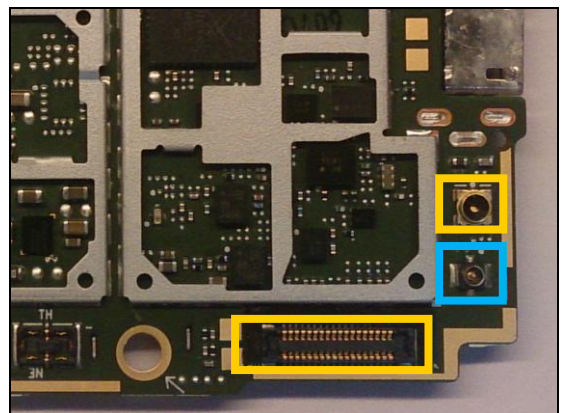


2

FJP2601, J220001

*Replace if mechanical damaged. (No or bad network, main antenna)*

*Protect the BtB and RF connectors with capton tape!*

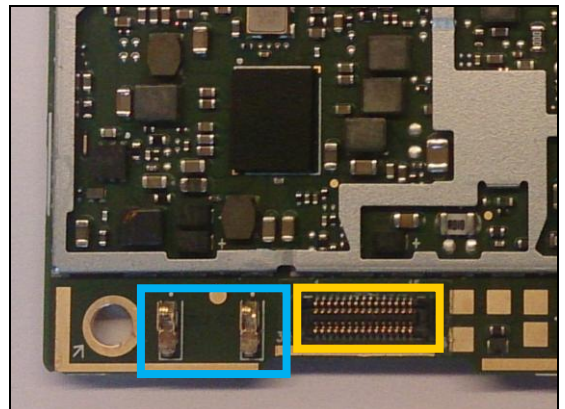


3

GP3101, GP3102, GP320001, GP320002

*Replace if mechanical damaged. (No or bad NFC)*

*Protect the BtB connector with capton tape!*

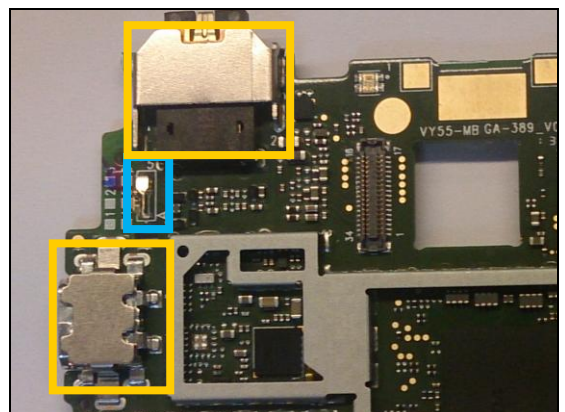


4

GP3301, GP300001

*Replace if mechanical damaged (Grounding pin)*

*Protect the Audio jack and USB connectors with capton tape!*



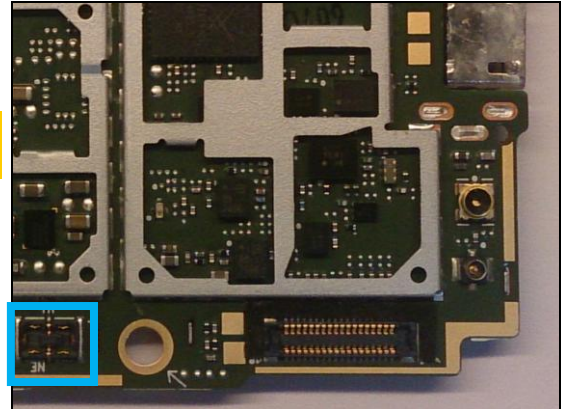


## Repair Actions: Additional Repair Info

5

J1401, J300002

**Replace if mechanical damaged (Phone dead or power off)**

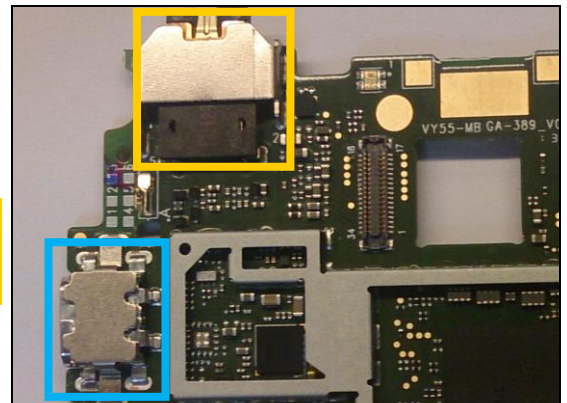


6

J1501, J150001

**Replace if mechanical damaged (USB charger or data transfer not working)**

**Protect the Audio jack connector with capton tape!**

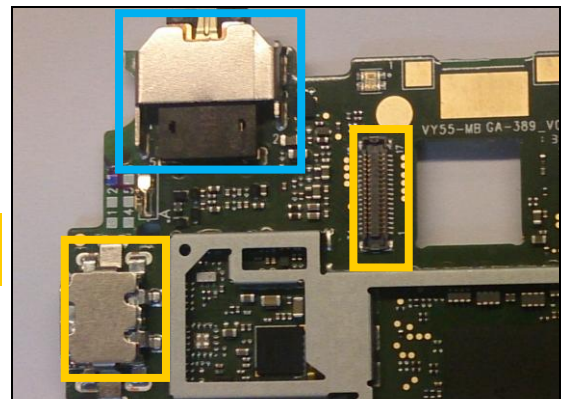


7

J170001

**Replace if no audio from headset.**

**Protect the BtB and USB connectors with capton tape!**



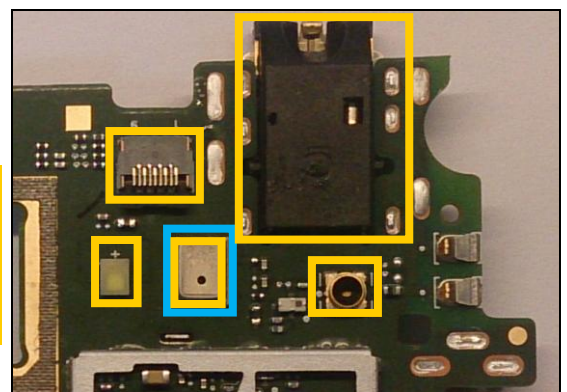
8

J170002

**Replace if no audio from secondary mic**

**When replacing protect secondary mic with capton tape!**

**Protect the LED, BtB, RF and Audio jack connectors with capton tape!**



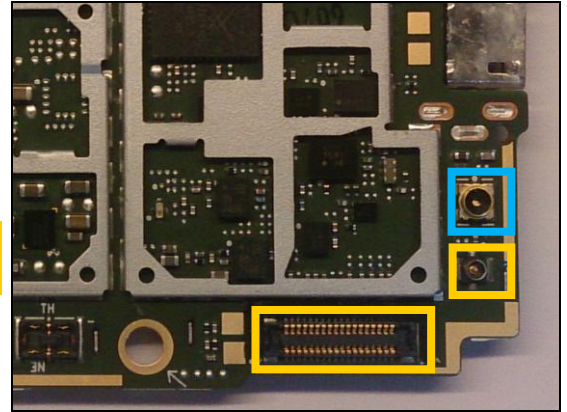
## Repair Actions: Additional Repair Info

**9**

J2601, J220002

**Replace if open circuit 1-2 (Bad network, main antenna)**

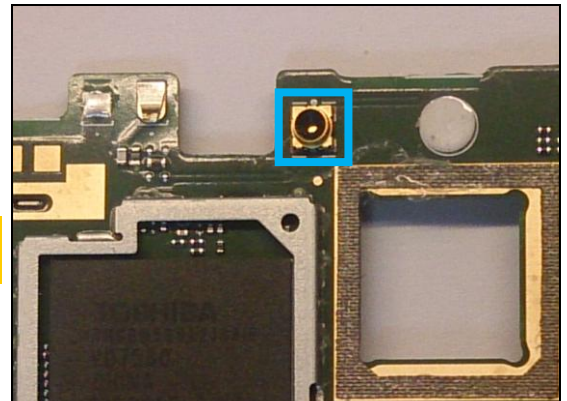
**Protect the coax and BtB connectors with capton tape!**



**10**

J2701, J360001

**Replace if open circuit 1-2 (Bad network, diversity Rx antenna)**

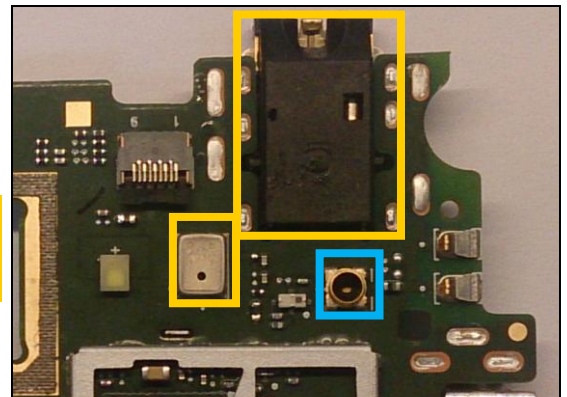


**11**

J2801, J270001

**Replace if open circuit 1-2 (No or bad GPS)**

**Protect the mic and Audio jack connector with capton tape!**

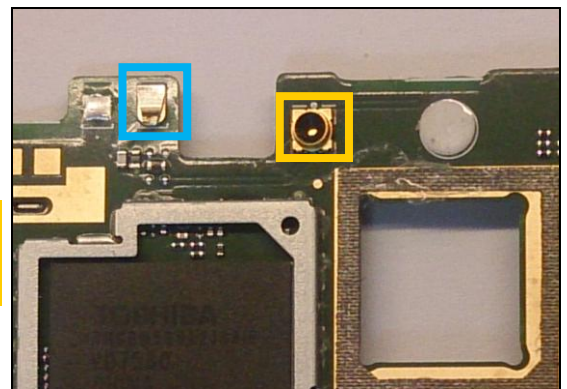


**12**

PAD2702, J360003

**Replace if mechanical damaged (Bad network, diversity Rx antenna)**

**Protect the RF connector with capton tape!**





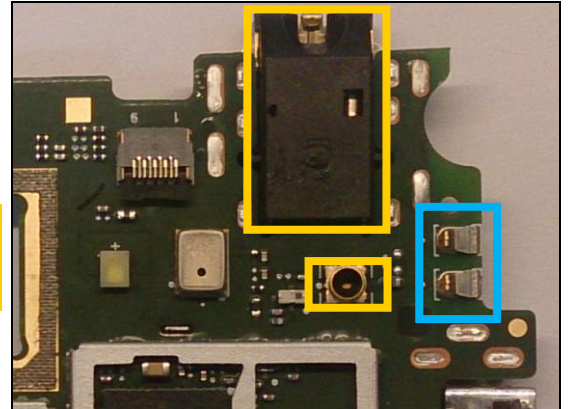
## Repair Actions: Additional Repair Info

13

PAD2801, PAD2802, PAD270001, PAD270002

*Replace if mechanical damaged (No or bad GPS)*

*Protect the RF and Audio jack connectors with capton tape!*



## 4 Revision History

Rev.	Date	Changes / Comments
1	2014-07-02	Initial release